



CSU Fresno Conference by Yvette DiCarlo, Student

Surveyors make friendly, bright, and diverse company. Thanks to a generous stipend from an anonymous CLSA-Sacramento Chapter member, I was able to attend the 50th Annual CSU Fresno Geomatics Conference Jan.

27-28, where surveyors from across the State congregated for the two-day event. Some of the outstanding professionals attending included Roger Frank, Tony Cuomo, Jay Seymour, Bill Hofferber, Ric Moore, Jerry

Miller, and Michael Pallamary.

As a student at Sacramento City College in the Geomatics program, the conference provided context to the larger surveying world including the

Continued Page 3

INSIDE THIS ISSUE:

NGS 4

Chances 6

Engineer's Day 12

Pinch Hitter 13

Snippets 14

Contacts 16

March 3, 2011

Socialize at 5:00

Dinner at 6:00

Logan's Roadhouse Natomas
3698 North Freeway Blvd
Sacramento, CA 95834

Tim Case, PLS

See preview on next page... Innovative Solutions
using New Technology

Talk Preview

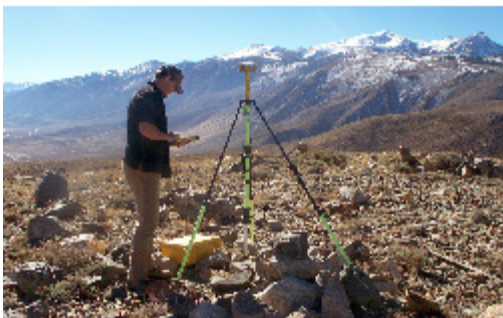
RBF was retained to scan a 7' diameter auger and its tray carriage after repairs. The auger removes inorganic solid waste from waste-water

treatment plant inflow. Both the auger and the carriage were resurfaced to original specifications. Our task was to determine if there would be an interference of any point in the auger with any

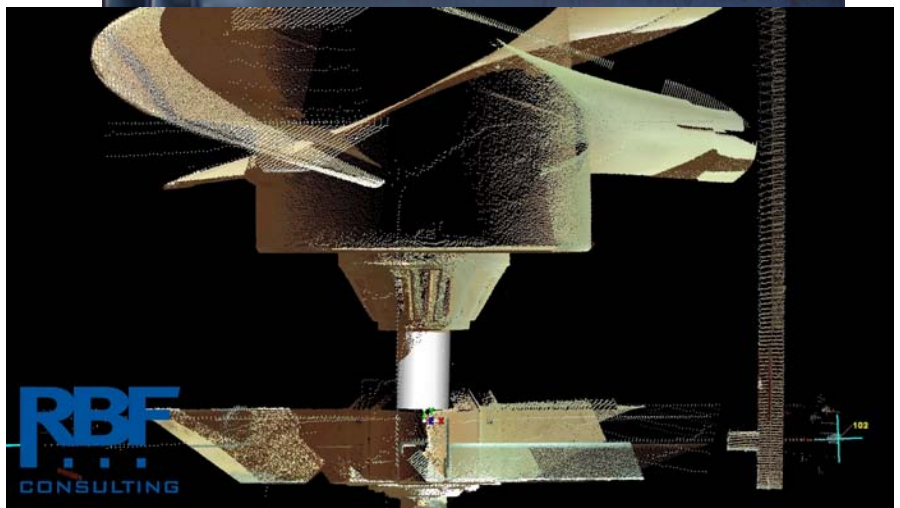
area within the tray carriage, before they lifted it back into place. We learned some valuable lessons from this effort, which I think are probably MORE important than this project for working with laser scanning.



www.RBF.com
Offices located throughout
Nevada, California and Arizona
800.479.3808



- Transportation / Public Works
- Water / Wastewater Engineering
- Planning / Environmental
- Construction Management
- GIS / Surveying / Mapping
- Community Engineering



Conference continued

challenges and opportunities facing the profession. Although it wasn't possible to cover all sessions, Thursday started out with Dr. Riadh Munjy from CSU Fresno who presented depths of photogrammetry which I pray our Sac City 340 class will not be tested on this semester. Next, Jay Seymour, L.S. from Pacific Land Consultants, had plenty of savvy advice for how to run a successful and profitable surveying business. He encouraged surveyors

not to sell their skills and labor short and not to price separately for time and materials. Why? Because surveyors usually aren't awarded time and materials by courts in the event of a contract dispute. Also, he suggested it's better to charge a variable rate depending on how fast a client wants the work completed.

Dr. Fareed Nader, retired professor from CSU Fresno presented, "What's in a Name?" about why the program changed from Surveying to Geomatics Engineering. What I found particularly

interesting was a survey of high school students who, when given just titles of professions they were interested in, ranked them as follows: 1) 'aerospace', 2) 'environmental' 3) 'engineering' and....last 10) 'surveying'. However, when they were given only the job descriptions of engineering professions (without the titles), they ranked them: 1) surveying, 2) mechanical, 3) chemical, 4) electrical, and lastly 5) civil. Dr. Nader described from his

Continued Page 8

LS TAC

The BPELSG LS Technical Advisory Committee (TAC) meeting dates have been set for 2011. The LS TAC will meet April 22, July 22, and October 7. The LS TAC is a valuable resource to BPELSG,

The LS TAC reviews topics pertinent to the land surveying discipline and provides recommendations to the Board. Individual LS TAC members may also be asked to assist Board staff in reviewing applications for licensure, enforcement complaint investigation cases, and other technical issues.

LS TAC members Michael Emmons, Michael Butcher, and Paul Enneking are to be commended for their service to our profession.

http://www.pels.ca.gov/about_us/tac_vacancies.shtml

http://www.pels.ca.gov/pubs/forms/tac_app.pdf



NGS

The NGS RTN team's draft document "National Geodetic Survey Guidelines for real Time GNSS Networks" has been approved by the NGS Products and Services Committee (PSC) for public release. The document will be sent to the FGCS and the AAGS Government Programs Committee for their review and comment. If you would like to review and comment, it will soon be available at the NGS website:

www.ngs.noaa.gov

Pacific Land Seminars 2011

3 Day F.L.S. (L.S.I.T.) Review Workshop
 Concord, Ca. Fri-Sun, March 25-27, 2011
 Orange, Ca. Fri-Sun, April 1-3, 2011

1 Day NCEES National PLS Practice Exam
 Concord, Ca. Thurs. March 10, 2011
 Orange, Ca. Thurs. March 17, 2011

PLS Review Workshop Series I
 Concord, Ca. Fri-Sun, Feb 4-6, 2011
 Orange, Ca. Fri-Sun, Feb 11-13, 2011

PLS Review Workshop Series II
 Concord, Ca. Fri-Sun, March 11 -13,
 2011
 Orange, Ca. Fri-Sun March 18-20,
 2011

PLS Review Workshop Series I & II
 Concord, Ca.
 Fri-Sun, Feb 4-6, 2011 & Fri-Sun March 11-12, 2011
 Orange, Ca.
 Fri-Sun, Feb 11-13, 2011 & Fri-Sun, March 18-20, 2011

PLS Review Workshop Series I and
 The National PLS Exam Review
 Concord, Ca. Fri-Sun, Feb 4-6, 2011
 Orange, Ca. Fri-Sun, Feb 11-13, 2011



Questions?
 Contact them at:

www.pacificland.com

Chances are...

If you attended Fresno State, you should have gone to the 50th CSU Fresno Geomatics Conference. Sure, there were great presentations, displays by sponsors, opportunities to see old classmates, and chances to network. But perhaps the thing those who did not attend missed out on most was not the incredible view of Clovis from the hotel



It was the chance to scour the table full of photos from years gone by.





SOUTHERN REGION



THE STATE OF NGS

Marti E. Ikehara
 California State Geodetic Advisor, National Geodetic Survey
 "Updates on NGS Programs"

THE STATE OF CSRC

Art Andrew & Yehuda Bock
 California Spatial Reference Center



THE STATE OF BPELSG

Pat Tami & Jim Foley
 Board for Professional Engineers, Land Surveyors and Geologists

SPECIAL GUEST

Michael J. Pallamary, PLS
 "Eminent Domain & the Private Sector Land Surveyor – The Other Side of the Table"

SEATING IS LIMITED
PLEASE RESPOND BY:
 THURSDAY, MARCH 31, 2011

CHECKS PAYABLE TO:
 LEAGUE OF CALIFORNIA SURVEYING ORGANIZATIONS

MAIL TO: RIVERSIDE COUNTY FLOOD CONTROL
 1995 MARKET ST
 RIVERSIDE, CA 92501

ATTN: JIM MORRELL
 (jmorrell@rcfood.org or 951.955.1224)

DATE: THURSDAY, APRIL 7, 2011
TIME: 9:00 A.M. TO 3:00 P.M.
FEE: \$25.00 (LUNCH INCLUDED)

District grounds will be under construction at the time of this meeting so PLEASE carpool to this meeting if possible!

HOSTED AT:
RIVERSIDE COUNTY FLOOD CONTROL & WATER CONSERVATION DISTRICT
 1995 MARKET STREET, RIVERSIDE, CALIFORNIA

SUPPORTING ORGANIZATIONS:

- ◆ NATIONAL GEODETIC SURVEY
- ◆ AMERICAN CONGRESS ON SURVEYING & MAPPING
- ◆ PLATE BOUNDARY OBSERVATORY
- ◆ AMERICAN COUNCIL OF ENGINEERING COMPANIES-CALIFORNIA
- ◆ UNITED STATES GEOLOGICAL SURVEY
- ◆ SOUTHERN CALIFORNIA EARTHQUAKE CENTER
- ◆ SOUTHERN CALIFORNIA GPS USERS GROUP
- ◆ CALIFORNIA LAND SURVEYORS ASSOCIATION
- ◆ CALIFORNIA SPATIAL REFERENCE CENTER

Conference continued

own experience that potential student recruits (and their parents) often have a less than flattering impression of a 'surveyor' as compared to other academic disciplines. As many surveyors are quite proud of being called surveyors and the professionalism they provide to society, the debate about what name should be used to increase enrollment at educational


institutions will surely continue.

The last session of the day was a professional panel Q&A session about education - how to promote it, whether it should be a requirement for licensure, and how to use education in a way that doesn't exclude people from entering or staying in the profession. As could be expected, a divergent set of views emerged during the discussion, with some

people wanting to require a 4-year degree for licensure similar to Canada's licensing requirements. Many technicians and licensed professionals felt that although there is a role for continuing education, it shouldn't be mandated and may be a detriment to those who can't afford to attend the few schools in California that offer such a 4-

Continued Page 10

PHOTOGRAMMETRIC MAPPING
ORTHOPHOTOGRAPHY VOLUME SERVICES



GEOMAPS

BALDUR TRYGGVASON
MANAGING PARTNER

GeoMaps, LLC. 916.361.9133
3330 Mather Field Road, Suite A 916.361.9517 Fax
Rancho Cordova, CA 95670 geomaps99@aol.com



MITCHEL E. BARTORELLI
ASSOCIATE
(775) 358-9491

Digital Mapping
Aerial Photography
GIS Services
Digital Orthophotography
Volume Services
Global Positioning Services

Land Information Solutions

1925 E. PRATER WAY www.TriStateLtd.com
SPARKS, NV 89434-8938 FAX (775) 358-3664
Email: MBartorelli@TriStateLtd.com (800) 411-3752

Thanks to Our Corporate Sponsors for Supporting the Sacramento Chapter



3380 Industrial Blvd., #105
West Sacramento, CA 95691
(916) 374-8575



Cooper Thorne & Associates
Engineering & Surveying
3233 Monier Circle
Rancho Cordova, CA 95742



3301 C Street #100-B
Sacramento, CA 95816
(916) 341-7760

**Michael Dequine
and Associates, Inc.**
Professional Land Surveying Services

2295 Gateway Oaks Drive, Suite #140
Sacramento, Ca. 95833
Ph: (916) 923-5820



Burrell Consulting Group, Inc.
1001 Enterprise Way, Suite 100
Roseville, CA 95678



2001 Broadway, 3rd Floor
Oakland, CA 94612
(510) 834-2001 www.hjw.com



1300 Ethan Way, Suite 300
Sacramento, CA 95825
(916) 921-9033
info@cbcsurveys.com

David B. Karoly, LS 7849
Boundary & Topographic Surveys
GPS Control Surveys

P.O. Box 661412
Sacramento, CA 95866
916-489-3528



5979 Freeport Blvd.
Sacramento, CA 95822
(916) 421-3465



GONZALES
SURVEYS, INC.
DBE/SMBE UNION SIGNATORY
6240 West 6th Street
Rio Linda, CA 95673
(916) 768-6303

Providing Engineering,
Surveying and Planning Services



MARK THOMAS AND COMPANY, INC.

7300 Folsom Blvd., Ste 203
Sacramento, CA 95826



Now located in Sacramento
R/W Mapping, Topos, Boundaries
A full-service DBE/SBE firm
916-419-2070



Stantec

2590 Venture Oaks Way
Sacramento, CA 95833-3288
(916) 569-2500

P S O M A S

1075 Creekside Ridge Dr. Ste 200
Roseville, CA 95678
(916) 788-8122



1788 Tribute Rd. Ste. 200
Sacramento, CA 95815
(916) 927-2400

Morrow Surveying
1450 Harbor Blvd. Ste. D
West Sacramento, CA 95691
(916) 372-8538

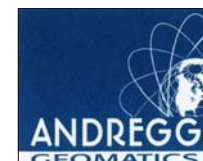
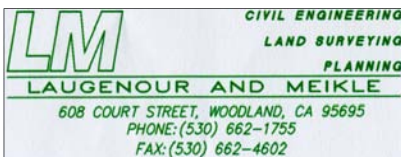


916.344.0232 • www.csdinc.com



SACRAMENTO • DUBLIN • FRESNO

Radman Aerial Surveys
6220 24th Street
Sacramento, CA 95822
(916) 391-1651



11661 Blocker Dr.
Ste 200
Auburn, CA 95603
(530) 885-7072

Being a Corporate Sponsor is a reasonable and cost effective way to support the Sacramento Chapter of CLSA. This corporate support is vital to sustaining our chapter activities, monthly newsletter and scholarship fund. If your firm would like to become a Corporate Sponsor please contact the editor at: focalpointeditor@gmail.com or (209) 518-9962.



Conference continued

year program. A call for more on-line classes was suggested by several audience members to make education more accessible, and possibly more affordable, for all surveyors.

The conference ended with a banquet and ceremony at which more than \$60,000 worth of scholarships were awarded. A very happy

handful of mostly CSU Fresno students received multiple awards as there seemed to be less applicants than the number of available scholarships. The moral? Every eligible Sacramento City College student should apply for scholarships. If you don't win one, it doesn't lower your GPA, so there's really nothing to lose.

I highly encourage anyone who hasn't attended this well-run student conference to learn from the excellent speakers and see the latest equipment from about 20 exhibitors. Thank you so much to the anonymous donor who made this trip possible.

For those of you studying the new BLM Manual:

What consultant's work prominently displayed has a triple Sacramento Connection?



Northern Counties Chapter, CLSA
Presents
FEMA Elevation Certificate Workshop

Speakers: Bill Horn, PE, CFM and Ray a Lee, WREA
CMF Certified Floodplain Manager WREA Water Resources Engineer Associate

The morning course is presented as profession development for licensed professionals and those preparing for licensure. Individuals or businesses that depend upon the works of the surveying professional will also find it informative. We will offer a thorough discussion of the current FEMA elevation certificate requirements with forms, instructions and examples.

Manual 2009: What’s Changed?
Speaker: Lance Bishop, PLS

The afternoon course is an informative course for licensed professionals and those preparing for licensure to discuss the changes, similarities and benefits of the 2009 Manual compared to the 1973 edition so the surveying professional can quickly refer to the new manual as a guide in the performance of their work with the Public Land System.

Note: Speaker fees have been donated. All proceeds fund Northern Counties scholarship donations to the CLSA education foundation.

Fees	by 3/19/2011	Door
Members	\$130	\$170
Non-member	\$170	\$210
Student	\$55	\$80

For more information contact:
Roger Wilkins, Secretary-Treasurer
Phone (530) 514- 0581
Email: ncc_clsa@yahoo.com

<p>Date: Friday March 25th Location: 4020 Olive Highway Oroville, CA 95966</p> <p><i>Space limited to first 80 registrants</i></p>



Engineer's Day at the Mall

Sacramento CLSA Chapter again kicked off National Engineers' week by participating in ASCE Sacramento Section's Engineers' Day at the Sunrise Mall. This was a great outreach opportunity to the public, reinforcing that Land Surveying is an integral part of Engineering. Additionally, contacts were made with scouting merit badge candidates, future Surveying/Geomatics students, and of course our local Engineers.

Chapter members attending included Annette Lockhart, Rob McMillan, Mike O'Connor, Karl Sharlette, Sherry and Wayne Toutges, and Jill Van Houten. Thanks to CSDS for the Trimble VX hybrid total station that "wowed" all the participants, especially the engineers.



Pinch Hitter

Baseball season is still a month away, but the Sacramento Chapter already has a "Pinch Hitter of the Month." With inclement weather threatening the Sacramento and Tahoe areas, LS Review series coordinator Annette Lockhart scrambled to find a "Pinch Hitter" in case *Water Boundaries* instructor, Kelly Olin was snowed-in at her Incline Village, NV home.

The weather performed as expected, dumping feet of snow on the Tahoe area. Kelly was unable to make the drive down, but she updated her presentation and shared it with Mike Bell of the State Lands Commission. Mike familiarized himself with the presentation and delivered a great class. As with any successful endeavor, teamwork was necessary to achieve our goals. That is a hallmark of the Sacramento Chapter. Annette, Kelly, and Mike worked together to ensure our students got an informative presentation. In the end, Mike stepped up to the plate and hit a home run for our students. Thanks Mike, you are our "Pinch Hitter of the Month."

Surveying Snippets

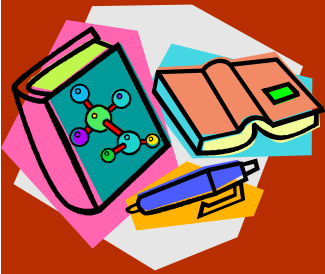
Once again, Spring is almost upon us, and it's time for Nor Cal GPS Users Group Meeting on March 11th, 2011 - 9:00 AM at the Contra Costa County Public Works office, 255 Glacier Drive, Martinez.

If you have a chance, stop by the El Dorado County Surveyor's Office over the next few weeks to view the maps submitted in the 17th Annual El Dorado County Student Map Drawing Contest. For details, see the next issue of the Cal Surveyor. Great work El Dorado SAGE!



It's National Engineers' week, so let's ease off on the Engineer jokes...

Sacramento CLSA Chapter member Pat Tami participated in a point-counterpoint debate at the February ASCE Sacramento Section luncheon



Several Sacramento CLSA members attended the Land Use Navigator's Subdivision Map Act seminar. Manrique Jarquin wrote to tell us: "The seminar was great. Michael Durkee was charismatic and humorous, which made it entertaining as well as informative. There was a lot of good information. It was one of the most enjoyable seminars I have been to." In case you missed it, another date in has been added in Northern California.

<http://landusenavigators.com/seminars>



Cuyamaca College

900 Rancho San Diego Parkway
El Cajon, CA 92109 Room F-724

Last Chance

Seminar

Questions and Answers

Legal Descriptions

Boundary

Public Lands

April 2

8 Hours

Food Included

8am to 4pm

All proceeds go to CLSA

\$25

Vance Breshears, Mike Hart,

Jaime Taynor, John Butcher,

Contact Jaime Taynor at jaime.taynor@qcccd.edu

CLSA SACRAMENTO - 2011 CHAPTER OFFICERS

Bill Telling	(916) 769-8258	President@sac-surveyors.org
Annette Lockhart	(209) 518-9962	VicePresident@sac-surveyors.org
Rob McMillan	(760) 846-4491	Secretary@sac-surveyors.org
David Gutierrez	(530) 392-8007	Treasurer@sac-surveyors.org
Oscar Jarquin	(916) 201-0992	PastPresident@sac-surveyors.org
Bill Telling	(916) 769-8258	BoardReps@sac-surveyors.org
Jerry Jones		BoardReps@sac-surveyors.org

Address: PO BOX 162846-2846, Sacramento, CA 95816

FOCAL POINT ADMINISTRATION

Editor	Annette Lockhart	(209) 518-9962	focalpointeditor@gmail.com
Workshops	Bill Telling	(916) 769-8258	workshop@sac-surveyors.org
Webgeek	Jeremy Dean		webgeek@sac-surveyors.org

The FOCAL POINT is a publication of the Sacramento Area Chapter of the California Land Surveyors Association and is pleased to publish letters from land surveyors and other interested persons on subject matter relevant to the land surveying profession. Please include your name, address and daytime phone number. Views expressed are the opinions of the individual writers and are not necessarily those of CLSA, the Chapter, or the editor. FOCAL POINT accepts no responsibility for the accuracy of the information given. Letters may be edited and published in any format. All letters submitted become the property of the Focal Point. Due to space restrictions, FOCAL POINT reserves the right to hold letters for publication at a later date.

sac-surveyors.org



admi
DIGITAL MAPPING, INC.

Complete GIS Photogrammetric Services

Aerial Photogrammetry
Airborne GPS
Airborne Lidar DEM/DTM
Close Range Photogrammetry
Data Conversion
Digital Mapping
Digital Orthophotography
Digital Terrain Model (DTM)
GIS Image Analysis
GIS Photogrammetry
GPS Survey Support
Photogrammetric Scanning Services

Toll Free 1-866-968-5459

Liliana Aliyazicioglu

President

MWBE

21062 Brookhurst St.
Suite 101 Huntington
Beach CA., 92646
Tel: 714-968-5459
Fax: 714-968-2429
www.admap.com
admi@admap.com